



HAM-LET HIGH FLOW DIAPHRAGM VALVES



2LDS12 - STANDARD MODEL

HF - HIGH FLOW



2LDS12 SERIES STANDARD MODEL

2LDS12 series provides a solution for high flow applications.

This model comes with end connections of 1/2" or 3/4" as a standard.

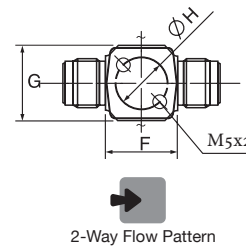
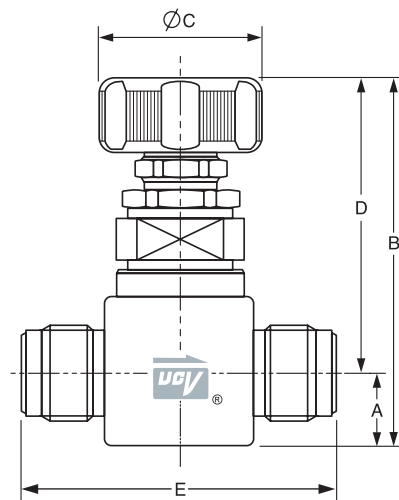
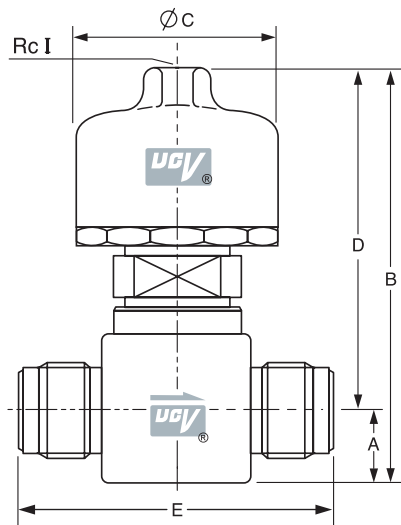
A forged body valve with various types of end connections such as compression tubing, male/female face seal, tube butt weld. In addition, the valve is available in manual and air operated (normally opened/closed) versions.

- Unique seat structure offers superb leak performance
- Compact design for minimum foot-print
- Electropolished surfaces
- Forged body



STANDARD CONFIGURATION DIMENSIONS

Part Number/ep	Size	End Connection	A	B	C	D	E	F	G	H	I
	inch		mm	mm	mm	mm	mm	mm	mm	mm	mm
2LDS12R-BV	3/4	Male HTC®	23	109	45	86	97	46	45	35	NA
2LDS12R-FV	3/4	Swivel Female HTC	23	109	45	86	146	46	45	35	NA
2LDS12R-W	3/4	Extended Butt Weld	23	109	45	86	146	46	45	35	NA
2LDS12C-BV	3/4	Male HTC	23	118	56	95	97	46	45	35	1/8"
2LDS12C-FV	3/4	Swivel Female HTC	23	118	56	95	146	46	45	35	1/8"
2LDS12C-W	3/4	Extended Butt Weld	23	118	56	95	146	46	45	35	1/8"

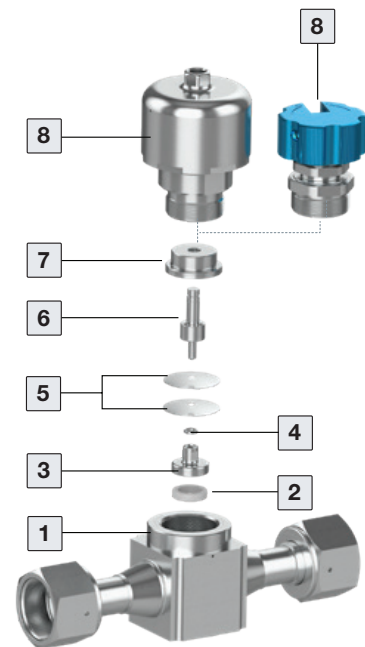


SPECIFICATIONS

Size	Design Pressure	Burst Pressure	Proof Pressure	Temp.	Cv	Leak Rates	
						Inboard	Across Seat
3/4"	1MPa (150 psi)	31MPa (4500 psi)	1.5MPa (225 psi)	-10 to 60°C	2.2	3X10 ⁻¹² pa•m ³ /sec Helium	3X10 ⁻⁹ pa•m ³ /sec Helium

STRUCTURE

Item No.	Parts	Material
1	Body	316L Stainless Steel
2	Seat	PCTFE/PI (Polyimide)
3	Seat Holder	316L Stainless Steel
4	Gasket	316L Stainless Steel
5	Diaphragm	Co-Cr-Ni Alloy
6	Stem	SS17-4PH
7	Stem Holder	SS17-4PH
8	Handle/Actuator	Aluminum



ORDERING INFORMATION - 2LDS12 SERIES

Valve Description Example:

2LD

S

12

C

-

BV

-

P

Valve Type

S - 2-Port Valve (Straight)

Body Size

12 - 3/4"

End Connection

BV - Male Face Seal

MV - Swivel Male Face Seal

FV - Swivel Female Face Seal

W - Extended Butt Weld

BW - Short Butt Weld

BI - LET-LOK®

Actuation Device

C - Air Operated N.C

O - Air Operated N.O

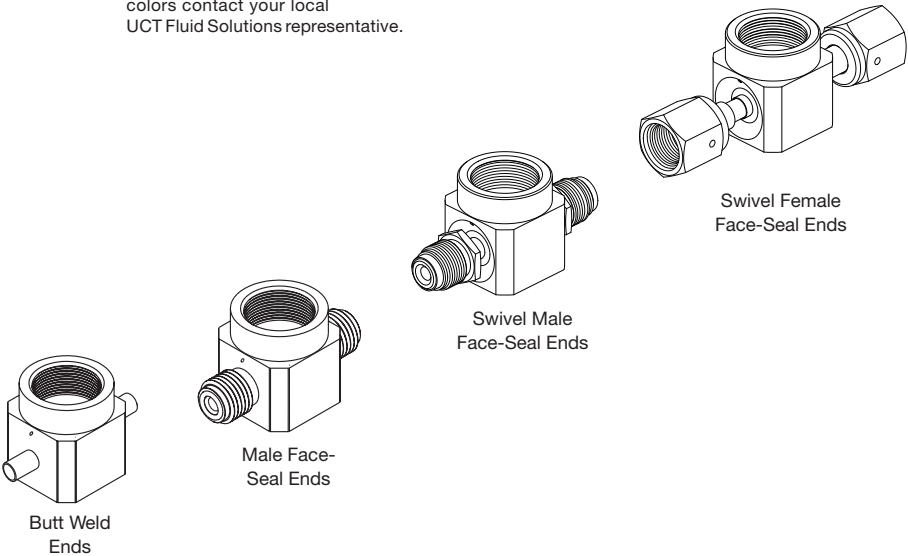
R - Round Handle

Feature

SD - Safe Device

Standard seat: PCTFE.

Blue handle is standard. For other colors contact your local UCT Fluid Solutions representative.



For your convenience, port conversion for forged valves to current HM series:
A = 30 | B = 35 | C = 34 | D = 31 | E = 32 | F = 33

Warning! For your safety

The system designer and user have the sole responsibility for selecting products suitable for their special application requirements, ensuring their safe and trouble-free installation, operation, and maintenance. Application details, material compatibility and product ratings should all be considered for each selected product. Improper selection, installation or use of products can cause property damage or personal injury.

HF SERIES HIGH FLOW

The HF UCV series provides a high-quality solution for high flow applications. With ¾" body size, the HF series, same as other UCV products, can be supplied with various end connections to match the end user's tubing system: compression tubing, male/female face seal, tube butt weld. In addition, the valve is available in manual and air operated (normally opened/closed) versions.



SPECIFICATIONS

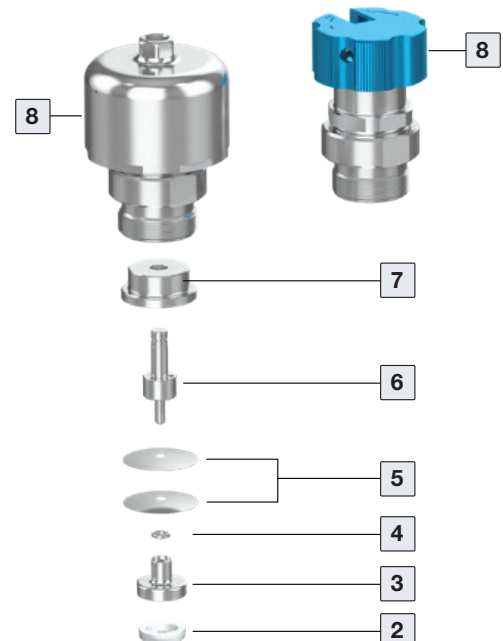
Specification	Item Data
Structure	Direct-seal, metal-diaphragm valve without seal packing, manually and pneumatically operated
Design Pressure	Vacuum to 250 psi (17.2 Bar)
Burst Pressure	4500 psi (310.2 Bar)
Proof Pressure	375 psi (25.8 Bar)
Operating Temperature: Standard	14 to 140°F, -10 to 60°C (PCTFE Seat)
Operating Temperature: Available	14 to 302°F, -10 to 150°C (PFA Seat)
Leakage: Inboard Leakage	≤ 3x10 ⁻¹¹ atm cc He/sec
Across the Seat	≤ 1x10 ⁻⁹ atm cc He/sec
Particle	No particles detected above 0.1µm.
CV Value	2.8
Surface Finish Ra (Ave)-Standard	5µin
Actuator Air Supply (Pneumatic)	5 - 6 Bar
Air Connection (Pneumatic)	Thread NPT 1/8"

Among its many industrial applications:

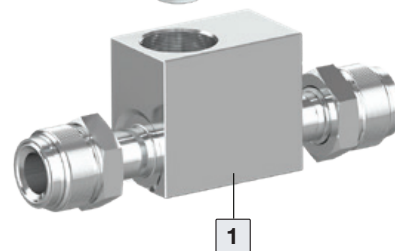
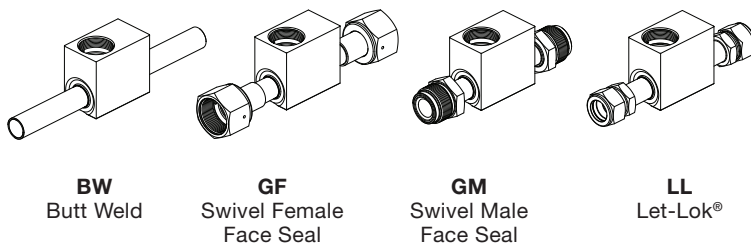
- Inert and Toxic gases.
- Valve Manifold boxes and panels.
- Special gas systems in fab – Bulk Gas Distribution.

STRUCTURE

Item No.	Parts	Material
1	Body	316L Stainless Steel
2	Seat	PCTFE/PI (Polyimide)
3	Seat Holder	316L Stainless Steel
4	Gasket	316L Stainless Steel
5	Diaphragm	Co-Cr-Ni Alloy
6	Stem	SS17-4PH
7	Stem Holder	SS17-4PH
8	Handle/Act	Aluminum



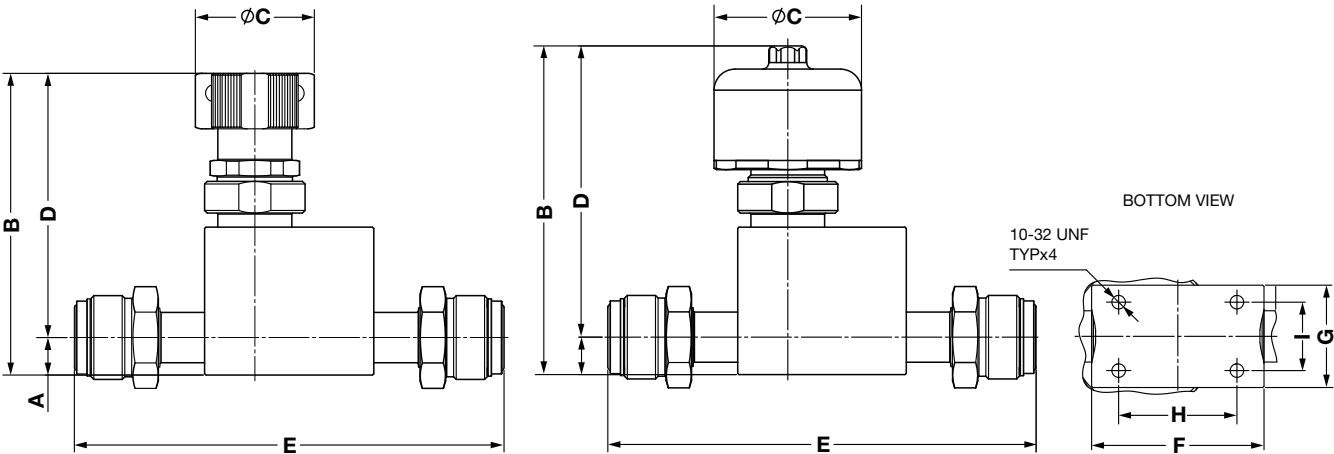
END CONNECTION TYPE



HIGH FLOW DIAPHRAGM VALVE HF SERIES

CONFIGURATION DIMENSIONS

DESCRIPTION	A	B	C	D	E	F	G	H	I
	mm	mm	mm	mm	mm	mm	mm	mm	mm
HF20-12LKC-GM12	14.2	124.8	56	110.6	162.6	64	38	43.9	25.4
HF20-12LKC-W12	14.2	124.8	56	110.6	216	64	38	43.9	25.4
HF20-12LKR-GM12	14.2	114.2	45	100	162.6	64	38	43.9	25.4
HF20-12LKR-W12	14.2	114.2	45	100	216	64	38	43.9	25.4



ORDERING INFORMATION HF SERIES

